

# CueScript

A WAY WITH WORDS...

## Complete On-Camera Prompter

Parts, Assembly and Mounting Manual



Model CSM 15-17-19 Prompters

# Contents

1	CueScript Prompter Parts (See Appendix 1)	3
1.1	Monitors	3
1.2	Hoods <sup>1</sup>	3
1.3	Mounting Options <sup>1</sup>	3
1.4	Mount Purple Risers	3
1.5	Balance Weights <sup>3</sup> :	3
1.6	Accessory Options <sup>3</sup>	3
1.7	Talent Monitor Options <sup>3</sup>	3
2	Mount Purple (See Appendix 2)	4
2.1	Unpacking	4
2.2	Set Up	4
2.3	Without Tripod Plate (for Vision 250 or 100 Heads)	4
2.4	Without Tripod Plate (for Sachler 1064, Miller or Cartoni Euro Style)	4
2.5	Attaching and Removing the Riser Plate	4
3	Mounting Weights (See Appendix 3)	5
3.1	Alternative weight positions, mounting on a 45 degree angle:	5
4	TR Rod Mounting	5
5	Monitors and Hoods (see appendix 4)	5
5.1	Monitor:	5
5.2	Molded Hood:	5
5.3	Collapsible Hood (see appendix 4 & 5)	6
5.4	Final Adjustment:	6
6	Robotic Hood Support (See Appendix 6)	6
7	Mounting the Time Display (See Appendix 7)	6
8	Mounting the Cue Number	6
9	Mounting the Talent Monitor (See Appendix 7)	6
10	Balancing	7
	Appendix 1	8
	Appendix 2	10
	Appendix 3	11
	Appendix 4	12
	Appendix 5	13
	Appendix 6	14
	Appendix 7	15

# 1 CueScript Prompter Parts (See Appendix 1)

## 1.1 Monitors<sup>1</sup>

- 15" (**CSM15**)
- 17" (**CSM17**)
- 19" (**CSM19**)

All monitor include the following:

- IEC Cord at right angle (**CSIECR**)
- Cue Light Sensor (**CSCLS**)

## 1.2 Hoods<sup>1</sup>

- Medium (**CSHM**)
- Large (**CSHL**)
- Collapsible (**CSHCM**)

## 1.3 Mounting Options<sup>1</sup>

- CS Mount Purple (**CSMP**)<sup>2</sup>
- Extra Large Mount Purple (**CSMPXL**)
- 7" T-Rods with Hood & Monitor receiver (set of 2) (**CSTRM**)
- 12" T-Rods with Hood & Monitor receiver (set of 2) (**CSTRL**)

## 1.4 Mount Purple Risers<sup>3</sup>

- 3" Risers (**CSMPRS**)
- 4" Riser (**CSMPRM**)
- 6" Riser (**CSMPRL**)

## 1.5 Balance Weights<sup>3</sup>:

- **CSBW4** - 14lbs/6.4kg
- **CSBW4H** – 25lbs/11.3kg

## 1.6 Accessory Options<sup>3</sup>

- Time Display (**CSTD**)
- Cue Number (**CSCN**)
- Robotic Hood Support (**CSRHS**)

## 1.7 Talent Monitor Options<sup>3</sup>

- 19" Talent Monitor (**CSTM19**)
  - Includes **CSTMM** Mount
- 24" Talent Monitor
  - Includes **CSTMML** Dual-Arm Mount

---

<sup>1</sup> One item per prompter system.

<sup>2</sup> Includes a Tripod Plate which is optional with the following heads: Vinten Vison 250, Vison 100 and similar

<sup>3</sup> Optional hardware, sold separate.

## 2 Mount Purple (See Appendix 2)

### 2.1 Unpacking

*If you have purchased the Mount Purple without a riser, continue to set up, as the Hood and Monitor receptacle is already attached. However, if you need to assemble please follow these brief instructions (Fig 1):*

1. With the Allen wrench, insert the hex screws into the Hood and Monitor Receptacle so they attach onto the front of the Mount Purple rods.
2. Tighten screws, so that both are flush and there is no movement between the Mount Purple and Receptacle bar.

### 2.2 Set Up

*Follow for both the Mount Purple and Mount Purple Extra Large.*

*Basic (Fig 2)*

1. Remove the camera wedge plate from the head of the tripod.
2. Remove the tripod plate from the mount purple. *(On the Extra Large you will need an allen wrench to remove and attach this plate).*
3. Loosen the locking lever and press the release button while sliding to remove<sup>1</sup>
4. Attach tripod camera plate to mount purple tripod plate adapter with ¼-20" and 3/8<sup>th</sup>-16 screws.
5. Attach camera, mounting to either mount purple camera plate, or mount purple riser camera plate using ¼-20" and ⅜-16" screws.
6. Mount tripod camera plate to the support.
7. Slide mount purple onto tripod adapter, making sure to press the release button to allow attachment.
8. Tighten the locking lever.

### 2.3 Without Tripod Plate (for Vision 250 or 100 Heads)

1. Remove the tripod plate from the mount purple
2. Loosen the shoe locking lever and press the release button while sliding to remove<sup>1</sup>
3. Attach camera, mounting to either mount purple, or riser plate using ¼" and ⅜" screws.
4. Slide the Mount Purple onto the support, using the dove tail channel on mount purple.
5. Secure with tripod specific locking system.

### 2.4 Without Tripod Plate (for Sachler 1064, Miller or Cartoni Euro Style)

1. Using the tripod plate of the Mount Purple, loosen the locking lever and snap into place on the tripod.
2. Slide mount purple onto tripod adapter, making sure to press the release button to allow attachment.
3. Tighten the locking lever.

### 2.5 Attaching and Removing the Riser Plate

*If initially purchased together, the rise plate should come preassembled onto the Mount purple. In the event that a riser plate needs to be added or removed after purchase, follow the below instructions.*

#### **To Attach:**

1. Attach the X riser mounts to the mount purple with logo facing out, using a standard 1/8" allen key and 4 screws, two per side<sup>2</sup>
2. Attach the riser plate to the X riser mounts, using a standard 1/8<sup>th</sup> allen key and 4 screws<sup>3</sup>

#### **To Remove:**

1. Remove the 4 screws and riser top plate first, using a standard 1/8<sup>th</sup> allen key<sup>2</sup>
2. Remove both X riser mounts, using a standard 1/8<sup>th</sup> allen key<sup>1</sup>

**\* Make sure the support head is locked before mounting the remaining hardware.**

### 3 Mounting Weights (See Appendix 3)

1. Remove the rod stop plate on mount purple.
2. Loosen weight clamping knob to allow room to slide weight onto rods.  
**WARNING: Be careful not to fully remove weight clamp, weights are heavy.**
3. Tighten weight clamp knobs.

#### 3.1 Alternative weight positions, mounting on a 45 degree angle:

1. Remove weight bars clamping knobs on top weight.
2. Turn weight bar once face, then tighten clamping knobs.
3. Add weight as described above.

### 4 TR Rod Mounting

TR Rods will be preassembled with Hood and Monitor receptacle bar attached.

1. Tighten rods into 3/8-16<sup>th</sup> mounting holes on studio heads.
2. Loosen the locking knob on the rods and extend to desired length.
3. Tighten the locking knob to secure.

### 5 Monitors and Hoods (see appendix 4)

#### 5.1 Monitor:

1. Adjust the 19mm rods forward to allow room to attach the hardware:
2. Loosen rod clamping knobs
3. Pull rod system forward
4. Tighten rod clamping knobs again for monitor mounting.
5. Loosen the monitor locating bosses <sup>2</sup>
6. Drop the monitor into the bosses then tighten bosses<sup>3</sup>

#### 5.2 Molded Hood:

1. Extend the hood mounting rods so they extend downward to allow room to mount hood onto mount purple.<sup>4</sup>
2. Loosen hood rod clamping knobs
3. Drop hood rods to furthest position to allow room to mount
4. Tighten hood rod clamping knobs.
5. Drop hood rod bosses into hood receptacles on mount purple.
6. Tighten hood bosses to fasten hood.
7. Loosen hood rod clamping knobs to drop hood into proper position.
8. Tighten clamping knobs into place.
9. Remove top three screws on hood.
10. Lower the glass frame.
11. Place the glass on the glass frame, making sure the sticker is readable from the front of the prompter.  
(This ensures glass is correctly oriented.)
12. Push glass into back of frame, and secure tabs at top corners.
13. Raise frame and reattach top screws with glass secured.

### 5.3 Collapsible Hood (see appendix 4 & 5)

1. Extend the hood mounting rods so they extend downward to allow room to mount hood onto mount purple.<sup>4</sup>
2. Loosen hood rod clamping knobs
3. Drop hood rods to furthest position to allow room to mount
4. Tighten hood rod clamping knobs.
5. Drop hood rod bosses into hood receptacles on mount purple.
6. Tighten hood bosses to fasten hood.
7. Loosen hood rod clamping knobs to drop hood into proper position.
8. Tighten clamping knobs into place.
9. Unbuckle hood strap, wrap around hood rods, and re-buckle.
10. Tighten until hood is at a 45 degree angle.
11. Flip the top over and Velcro secure.
12. Open the glass opening at top and slide glass into place.

*Please note for optimal use with our travel cases, glass should not have to be removed each time, and can travel in a folded hood.*

### 5.4 Final Adjustment:

1. Loosen mount purple rod clamping knobs
2. Slide hood and monitor setup back into position over camera lens, making sure to center lens in hood resting just behind glass.
3. Position lens shroud around camera lens to block all outside light from inside hood.

## 6 Robotic Hood Support (See Appendix 6)

1. Attach the two parallel rods into the side of the mount purple.
2. Loosen the thumbscrew in the track and attach the clamp over the hood support rod.
3. Extend the thumbscrew in the track as far back as possible to make the strongest triangular shape.
4. Tighten the thumbscrew in the track and on the hood rod support.

## 7 Mounting the Time Display (See Appendix 7)

*If purchased or received after Talent Monitor is mounted, please dismount your talent monitor prior to installing the clock. If you have received everything at the same time, you're mounting system is already assembled correctly, please follow instruction 1 only.*

1. Attach the Time Display Brackets on the back of the Time Display with the 4 provided thumb screws.
2. Remove the top rails from the talent monitor mount and replace with the Time Display Rails.

## 8 Mounting the Cue Number

1. When glass is inserted and secured in hood, place the Cue Number directly in the center of the hood. (You may need to remove the center glass screw, however, magnet is secure enough to replace this.)

## 9 Mounting the Talent Monitor (See Appendix 7)

1. Attach Talent Monitor Mount system to Talent Monitor with thumb screws.
2. Loosen rod guides on top of the Talent Monitor Mount rods.
3. Slide rod guides into talent monitor rod channel on prompter monitor, then tighten rod guides to secure talent monitor positioning in channels.

4. Adjust kip lever screws to position talent monitor at desired angle. (On the dual-arm mount, adjustment to both sides is required.)

## 10 Balancing

*Adding a prompter to any style tripod will always make the camera front heavy. To get the correct center of gravity the camera will more than likely need to be positioned as far back as possible. This can be done in the following ways:*

1. Obscure the off-set of the Mount Purple Light by attaching the camera wedge plate as far forward to the mount as possible.
2. Off-set the top purple plate so it is pulled as far back as possible (so top front screws line up with the grey riser columns)
3. Mount the camera to the back of the top purple plate; this way the camera weight will help balance the weight of the front prompter, mounts, and hood.
4. Lock the wedge plate towards the back of the tripod head, or slide the platform to the rear of the tripod head

# Appendix 1

1.1



1.2



Large Hood

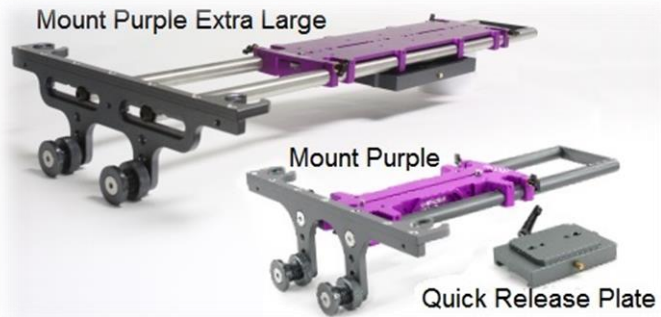


Medium Hood

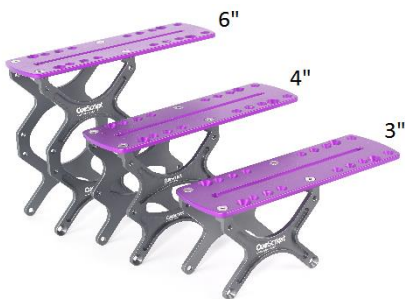


Collapsible Hood

1.3



1.4



1.5



CSBW4H



CSBW4



## 1.6

Time Display (with brackets)



Cue Number

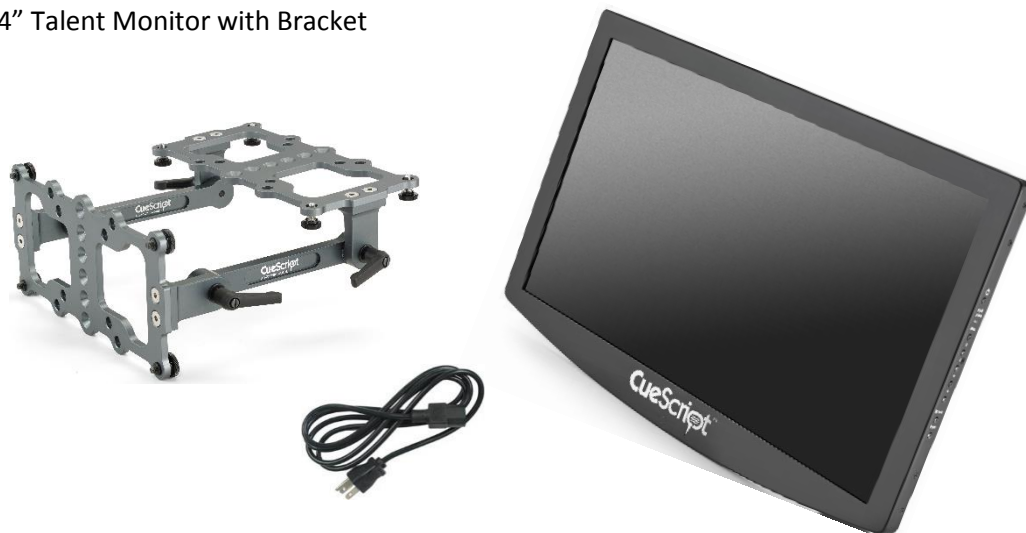


## 1.7

19" Talent Monitor with Bracket



24" Talent Monitor with Bracket



## Appendix 2

Fig. 1)

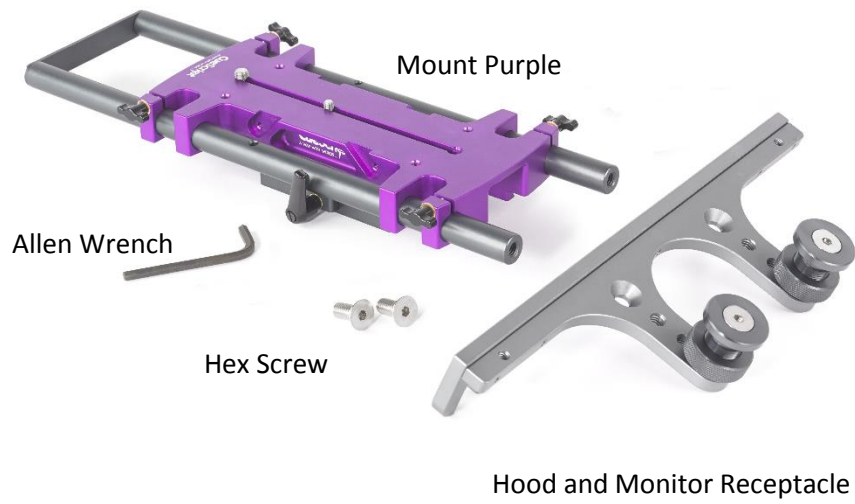


Fig. 2)

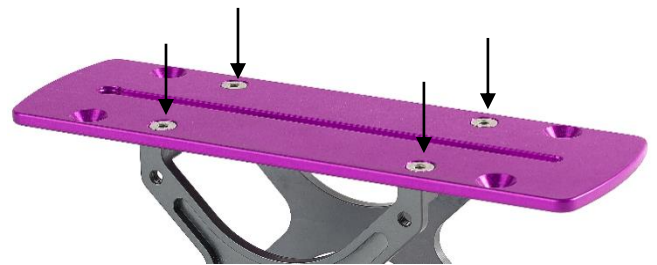
1.



Fig. 2)



Fig. 3)



# Appendix 3

## Weight Clamping Knob

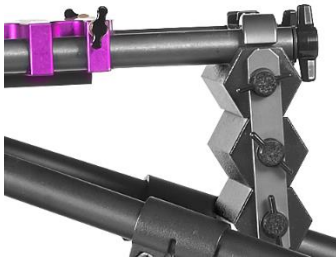
Stop Plate



Weight Bar  
Clamping Knob



Straight Mount



Alternative: 45 degree mount



## Appendix 4

Fig. 1)

(Pull Forward)

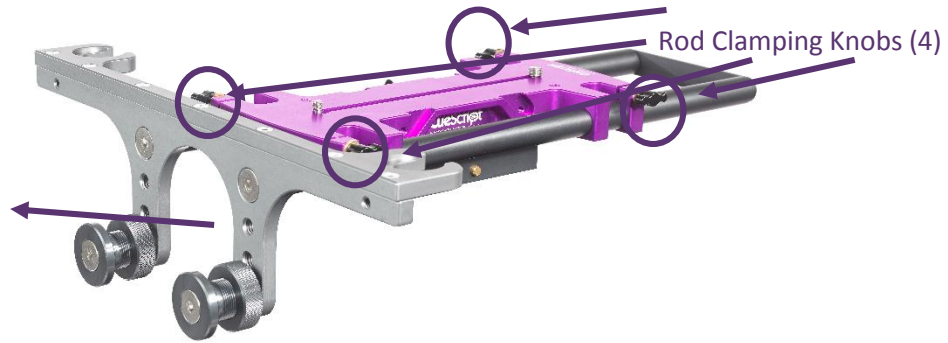


Fig. 2)

Monitor Bosses

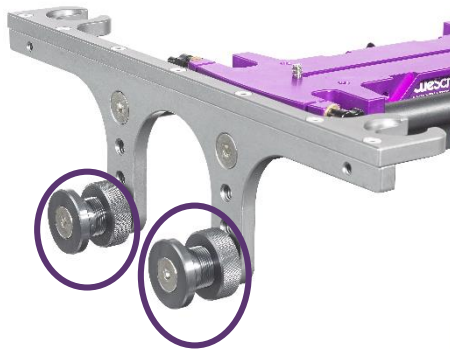


Fig. 3)



Fig. 4)



## Appendix 5



Hood straps



Top of Hood



Glass Opening

## Appendix 6



Step 1 & 2

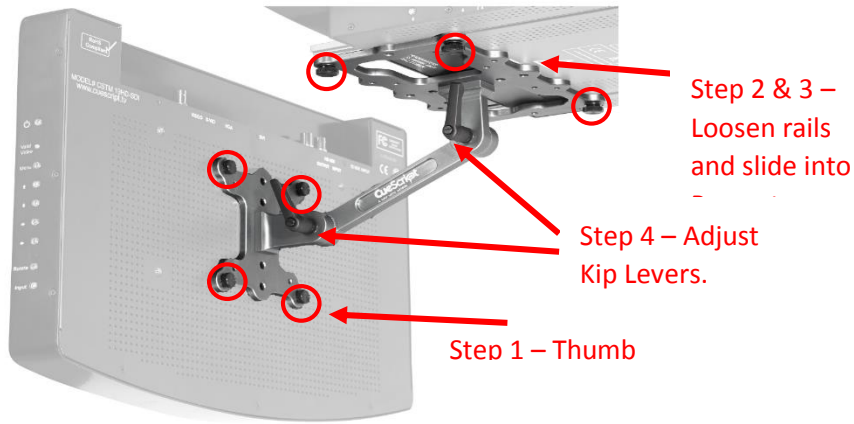


Step 3 & 4

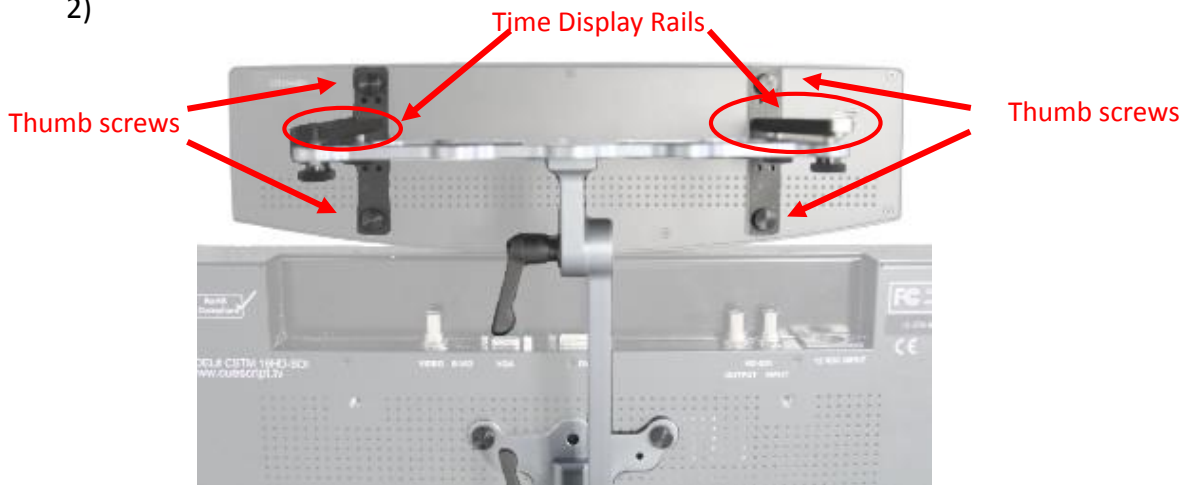


# Appendix 7

1)



2)







## Parts, Assembly and Mounting